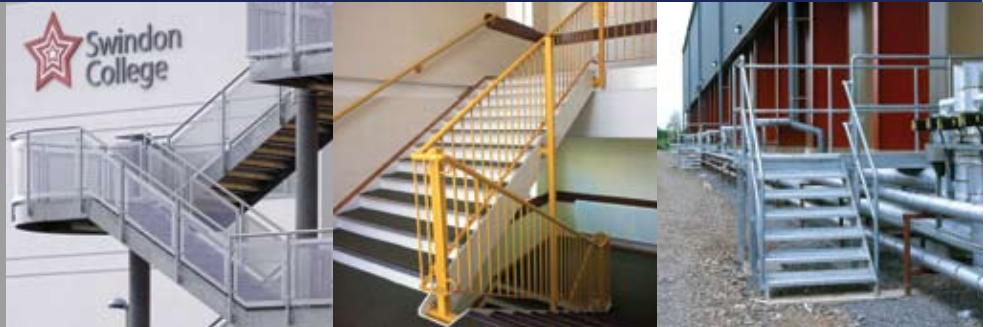




Product information - External and internal escapes

Most buildings have a requirement to comply with fire regulations and our knowledge enables us to assist with the design to meet the latest regulations. Usually fire escapes are "back of house" but equally if the requirement is to provide an architectural feature means of escape we can provide both a functional and aesthetic solution. Shopping centres, large office, schools residential blocks often have internal escape or circulation stairs which require balustrades. Consideration is always given to a cost effective solution to meet the requirement of the specification.

- > Galvanized structure with central column support system and curved landings.
- >> Powder coated vertical bar infill fixed to steel stair.
- >>> Galvanized access stair and landing over service pipework.



Galvanized structure with perforated infill panels.



Galvanized structure with column support system and disabled refuge areas.

Galvanized structure with central column support system and curved landings.

Galvanized structure and balustrade with mesh infill panels to balustrade.



Powder coated with glass infill.



Taunton Fabrications
STEEL FABRICATION • ARCHITECTURAL METALWORK

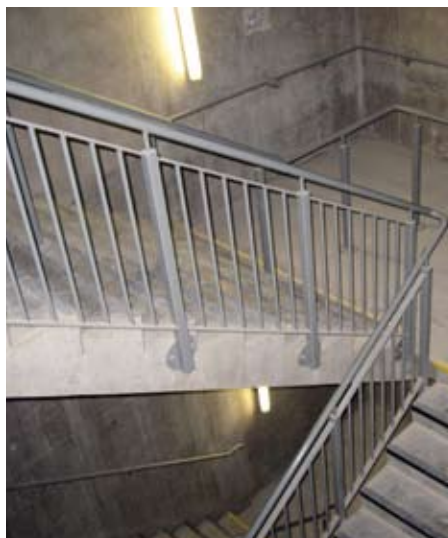


Taunton Fabrications Ltd, Cornishway East
Galmington Trading Estate, Taunton
Somerset TA1 5LZ

Telephone: 01823 324 266

Email: info@tauntonfab.co.uk

Website: www.tauntonfab.co.uk



Vertical bar infill with central division rail prime painted for decoration on site by contractor.



Powder coated structure and balustrade.